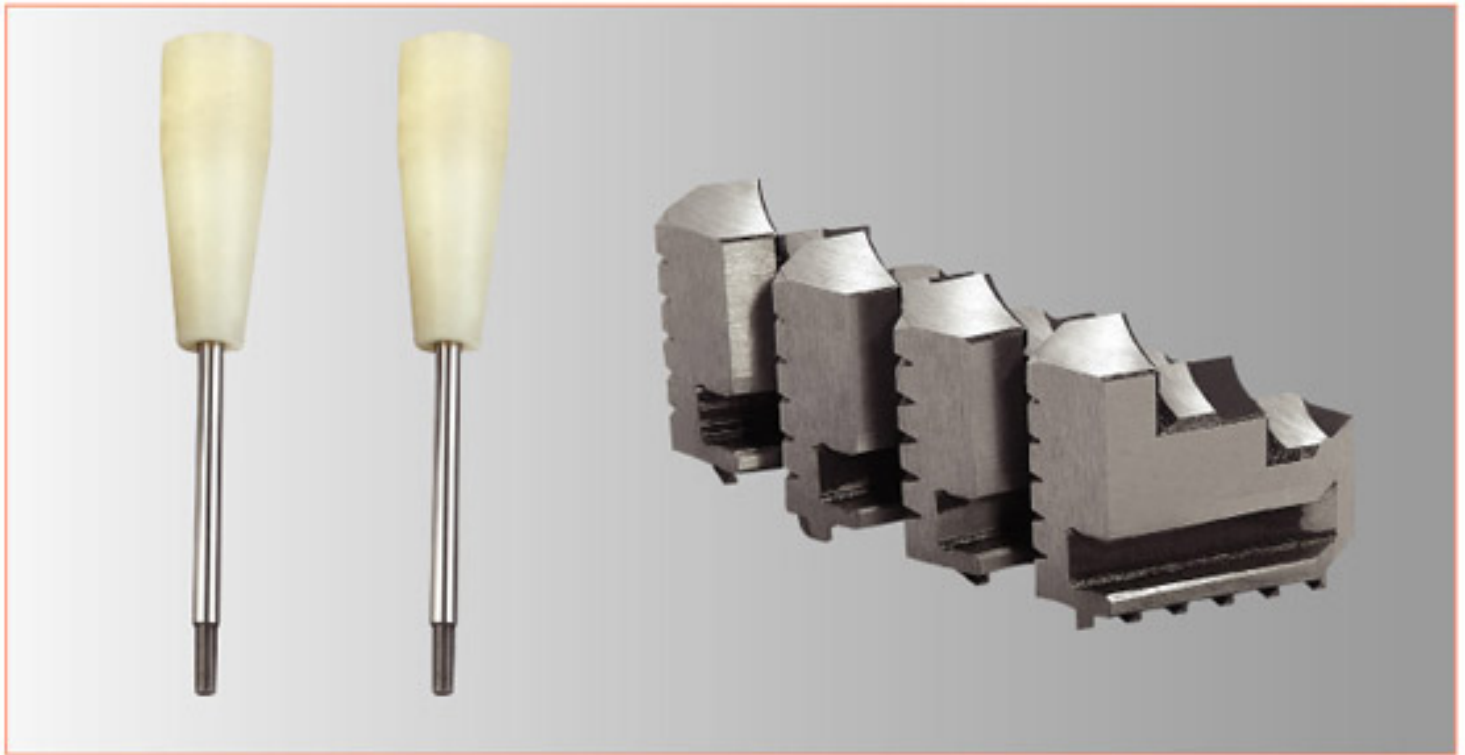
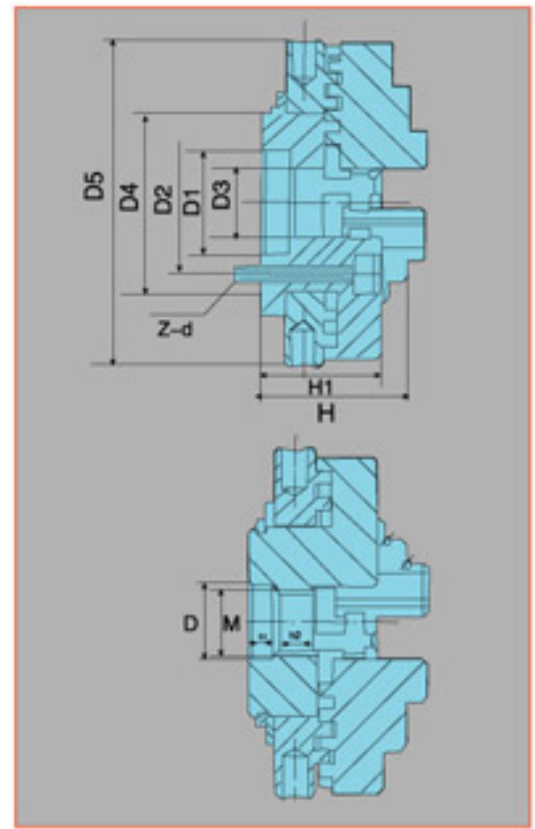


Features:

- 1.The chucks have two mounting types:the short cyindrical center mounting and the thread mounting.
- 2.The compact chucks are small vilume.easy to be used and enjoy a high centring prect sion as well as a large clamping range.
- 3.The chucks are made for mrter machine tiilsin the processing of non-ferous metals,non-matals like plastics and so on.

Dimension parameters

Size	D	D1	D2	D3	D4	D5	H	H1	h	h1	h2s	Z-d	M	Claming Range	Gripping force	Net. WT
63	14.1	22	28	14	36	68	34	25	6	5	8	3-M4	M14;Á1	1-50	16-50	0.5
80	16.1	25	35	16	45	84	42	30	6	5	9.5	3-M5	M16;Á1	1.5-70	20-70	1.5
100	24.1	32	42	22	52	104	52	36.5	6	5	9.5	3-M6	M24;Á1	2-90	26-90	2



Features:

- 1.The chucks have two mounting types:the short cyindrical center mounting and the thread mounting.
- 2.The compact chucks are small vilume.easy to be used and enjoy a high centring prect sion as well as a large clamping range.
- 3.The chucks are made for mrter machine tiilsin the processing of non-ferous metals,non-matals like plastics and so on.

Characteristic parameters

Size	D	D1	D2	D3	D4	D5	H	H1	h	h1	h2s	Z-d	M	Claming Range	Gripping force	Net. WT
63	14.1	22	28	14	36	68	34	25	6	5	8	3-M4	M14;Á1	1-50	16-50	0.5
80	16.1	25	35	16	45	84	42	30	6	5	9.5	3-M5	M16;Á1	1.5-70	20-70	1.5
100	24.1	32	42	22	52	104	52	36.5	6	5	9.5	3-M6	M24;Á1	2-90	26-90	2