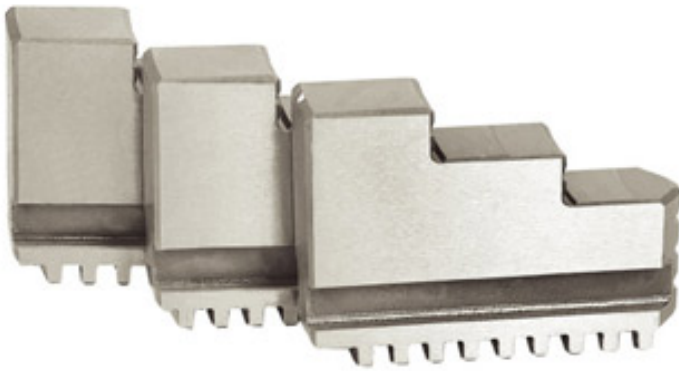
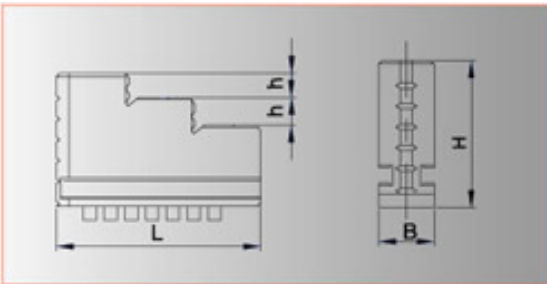


K11;K15 THREE-JAW SELF-CENTRING CHUCK JAWS



Hard jaws include one-piece ones and two-piece ones for A; ϕD ; ϕC .
All kinds of hard jaws can be provided as the request of customers.

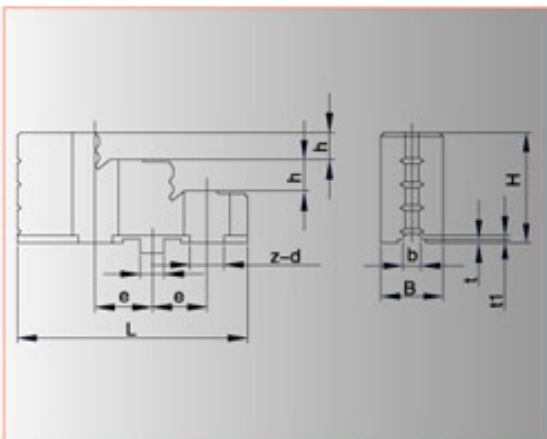
One-piece Jaws



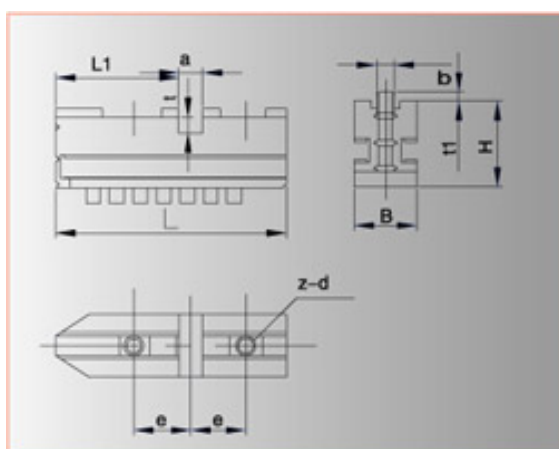
Size	80	100	125	130	160	165	190	200	240	250	315 320 325 380
L	32	42	56	56	70	70	72	85	105	105	130
B	12	15	16	16	18.5	18.5	22	22	27	27	36
H	33	38	45	45	5	54	57	61	69	69	91
h	6.5	7	9	9	12	12	12	12	12	12	18

The chuck with one-piece jaw is provided with each set of internal and external ones. 11 three-jaw short tape series.

Two-Piece Jaws for Form A, D



Size	160	200	250	315	325		380	400	500	630
L	67	80	95	108	108	130	130	130	130	132
B	25	30	36	45	45		45	45	45	45
H	41	45	53	61	61	70	70	70	82	82
h	9	10.5	13.5	17.5	17.5	17	17	17	22	22
a	12.675	12.675	19.025	19.025	19.025		19.025	19.025	19.025	19.025
b	7.94	7.9412.7	12.7	12.7	12.7		12.7	12.7	12.7	12.7
e	19	22.2	27	31.75	31.75	38.1	38.1	38.1	38.1	38.1
t	3	3	3	3	3	6	6	6	6	6
t1	4	4	4	4	4		4	4	4	4
z-d	2-11	2-11	2-13	2-13	2-13	2-18	2-18	2-18	2-12	2-12

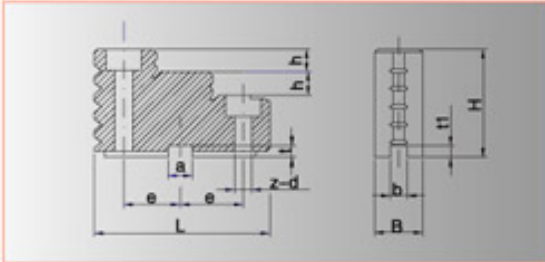


Size	160	200	250	315	325		380	400	500	630
L	64	80	98	110	110	114	130	130	130	132
L1	29	34.9	39.747.6	47.6	47.6	45	45	45	45	45
B	20	22	27	36	36		36	36	45	50
H	33	35	38	42	42	46	46	46	55	50
a	12.675	12.675	19.025	19.025	19.025		19.025	19.025	19.025	9.025
b	7.95	7.94	12.7	12.7	12.7		12.7	12.7	12.7	12.7
e	19	22.2	27	31.75	31.75	38.1	38.1	38.1	38.1	38.1
t	4	4.2	4.2	4.2	4.2	7	7	7	7	7
t1	3	3	3	3	3		3	3	3	3
z-d	2-M10	2-M10	2-M12	3-M12	3-M12	3-M16	3-M16	3-M16	4-M20	5-M20

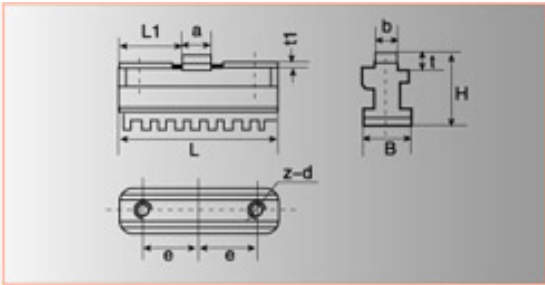
;)The jaws are composed of top jaws and master jaws, Master jaws for from A size 325,380 and from D without clamp arc.



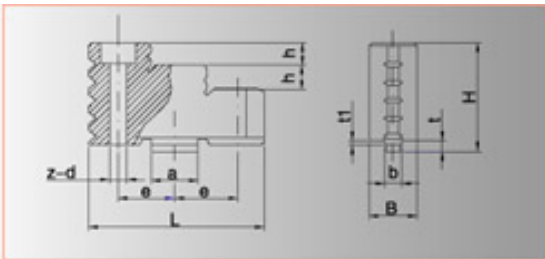
Two-piece jaws form C



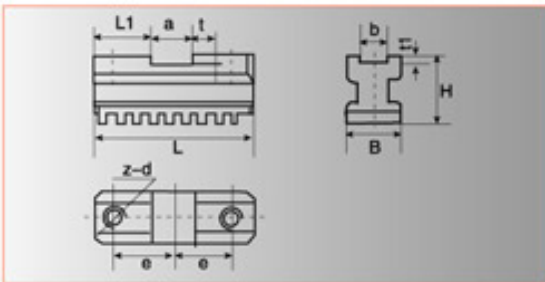
Size	L	B	H	h	a	b	e	t	t1	z-d
200	88	22	44	12	13	11	28	7	3	2-9
240	108	27	46	12	13	13	35	7	3	2-11
250	108	27	46	12	13	13	35	7	3	2-11



Size	L	B	H	h	a	b	e	t	t1	z-d
200	76	31.5	22	36	13	11	28	6	2	2-M8
240	95	41	27	39	13	13	35	6	2	2-M10
250	95	41	27	39	13	13	35	6	2	2-M10



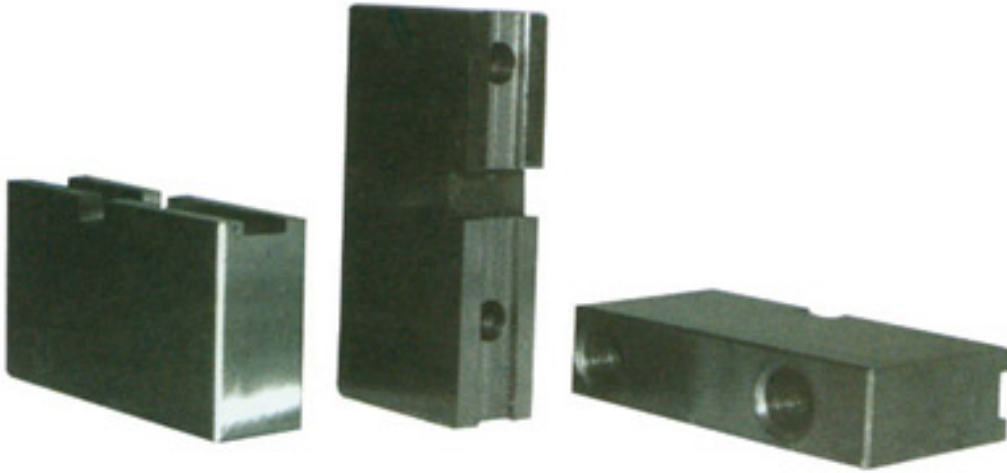
Size	L	B	H	h	a	b	e	t	t1	z-d
320	127	36	59.5	17	28	15	77	7.5	2.8	2-13
325	127	36	59.5	17	28	15	44	7.5	2.8	2-13
380	127	36	59.5	17	28	15	44	7.5	2.8	2-13



Size	L	B	H	h	a	b	e	t	t1	z-d
320	114	43	36	40	28	15	44	8.5	3.5	2-M12
325	114	43	36	40	28	15	44	8.5	3.5	2-M12
380	114	43	36	40	28	15	44	8.5	3.5	2-M12

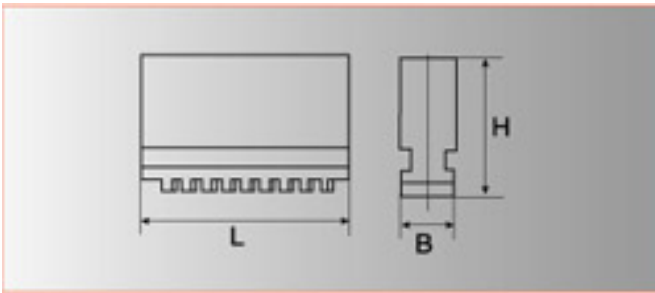
The jaws are composed of top jaws and master jaws.

RZ SOFT JAWS



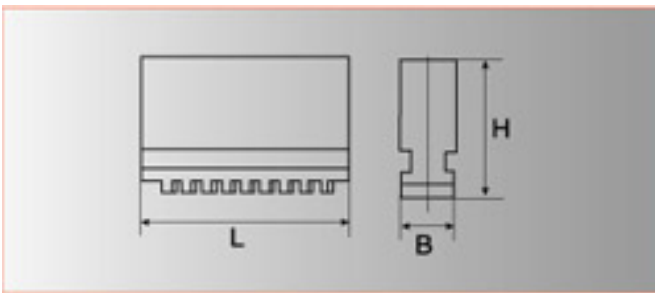
All kinds of soft jaws can be provided as the request of customers for K11,K10,K12 series chucks.

Soft jaws include on-piece soft jaws and two-piece soft jaws (from C₁ to A₁ £©).



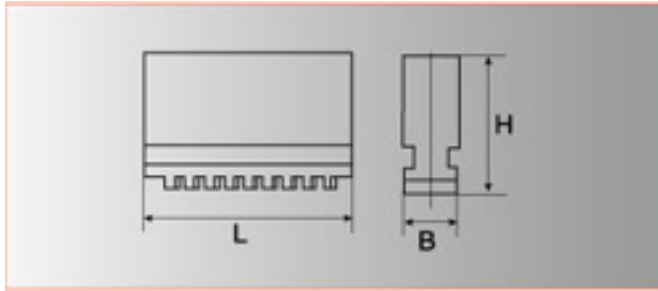
One-piece soft jaws

Size	RZ 1180	RZ 11100	RZ 11125	RZ 11130	RZ 11160	RZ 11165	RZ 11190	RZ 11200	RZ 11240	RZ 11250	RZ11315 RZ11320	RZ11325 RZ11380
L	32	42	56	56	70	70	72	85	105	105	130	130
B	12	15	16	16	18.5	18.5	18.5	22	27	27	36	36
H	32	38	45	45	54	54	54	61	69	69	91	91



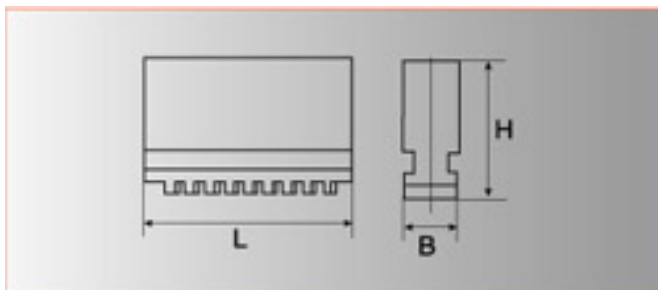
Soft top jaws (type C)

Size	RZ 1180	RZ 11100	RZ 11125	RZ 11130	RZ 11160	RZ 11165	RZ 11190	RZ 11200	RZ 11240	RZ 11250	RZ11315 RZ11320	RZ11325 RZ11380
L	32	42	56	56	70	70	72	85	105	105	130	130
B	12	15	16	16	18.5	18.5	18.5	22	27	27	36	36
H	32	38	45	45	54	54	54	61	69	69	91	91



Soft top jaws (type C)

Size	L	L1	B	H	a	b	e	t	t ₁	c	d	d1
RZ11320C	137	64	36	75	28	15	44	7.5	2.8	60.5	13	15
RZ11325C	137	64	36	75	28	15	44	7.5	2.8	60.5	13	17
RZ11380C	137	64	36	75	28	15	44	7.5	2.8	60.5	13	17



Soft top jaws (type A)

Size	L	L1	B	H	a	b	e	t	t ₁	c	d	d1
RZ11160A	74	36	25	47	12.675	7.94	19	3	4	36	11	17
RZ11200A	90	43	30	55	12.675	7.94	22.2	3	4	41	11	17
RZ11250A	110	50	36	63	19.025	12.7	27	3	4	50	13	20
RZ11315A RZ11325A	120	57	45	70	19.025	12.7	31.75	3	4	54	13	20
RZ11380A RZ11325A	135	67	45	85	19.025	12.7	38.1	6	4	66	18	26
RZ11400A	135	67	45	85	19.025	12.7	38.1	6	4	66	18	26
RZ11500A	160	80	50	90	19.025	12.7	38.1	6	4	68	22	32

ADAPTER PLATTES



ADAPTER PLATES



ADAPTER PLATES



ADAPTER PLATES



ADAPTER PLATES



ADAPTER PLATES



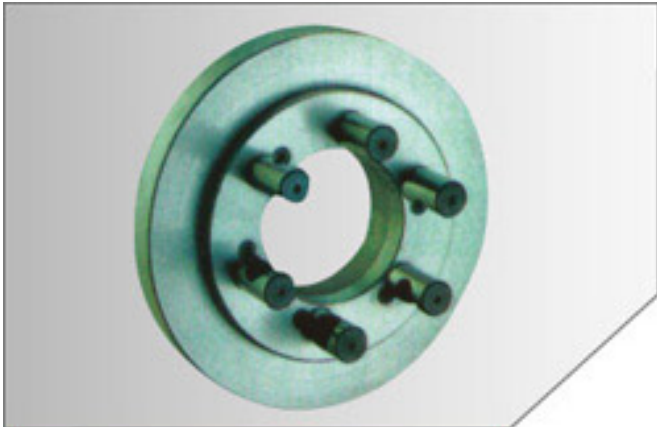
ADAPTER PLATES



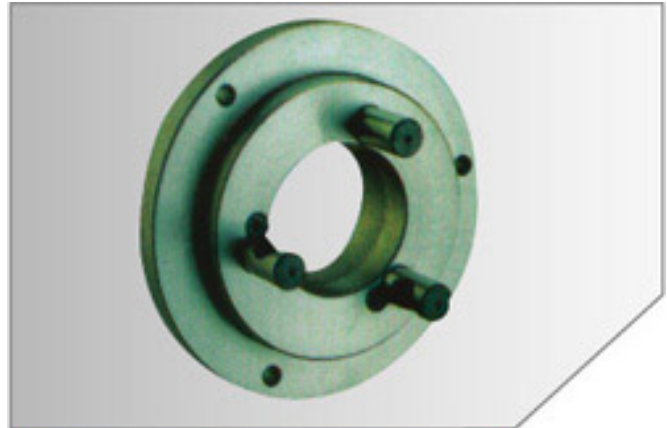
ADAPTER PLATES



ADAPTER PLATES



ADAPTER PLATES



ADAPTER PLATES



ADAPTER PLATES



ADAPTER PLATES



ADAPTER PLATES



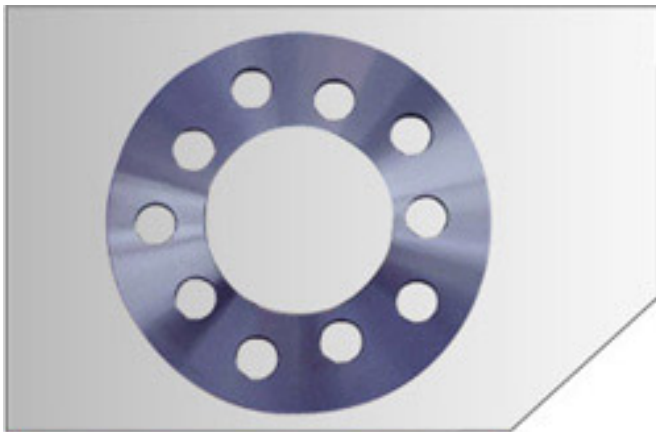
ADAPTER PLATES



ADAPTER PLATES



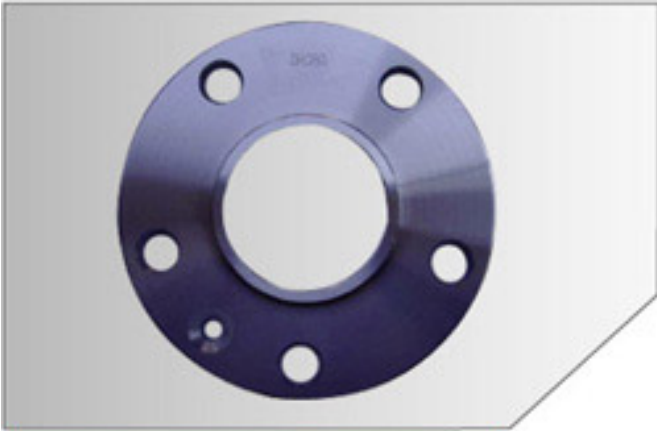
ADAPTER PLATES



ADAPTER PLATES

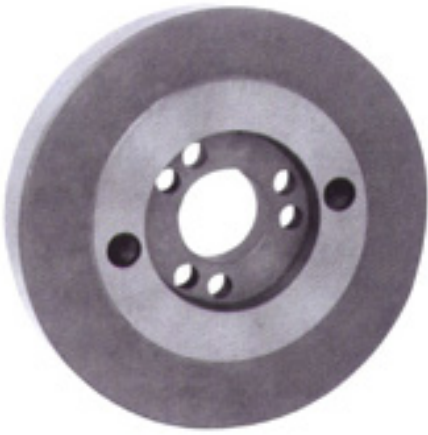


ADAPTER PLATES

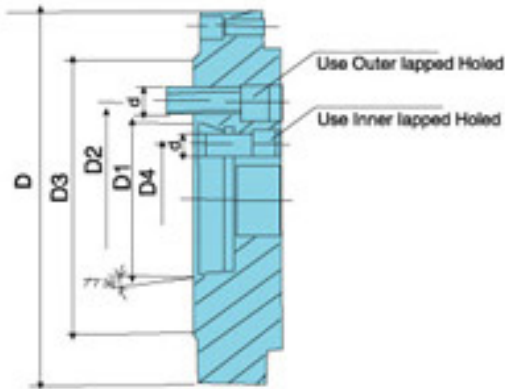


ADAPTER PLATES

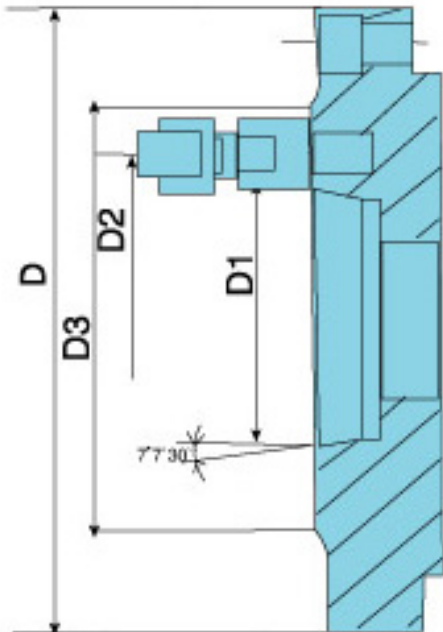
ADAPTER PLATTES



Type A (A1,A2)

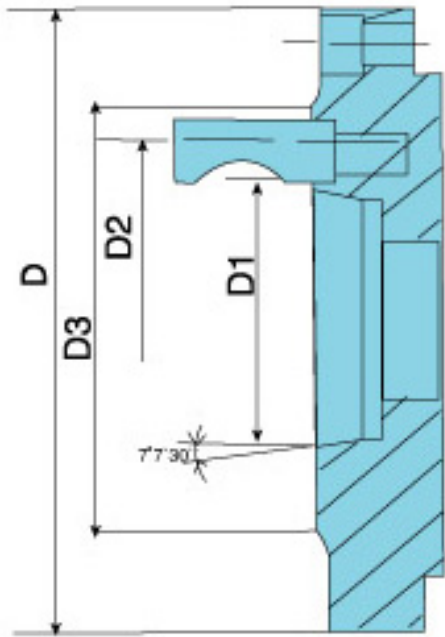


NO.	3	4	5	6	8	11	15
D1	53.975	63.513	82.563	106.375	139.719	196.869	285.775
D2	70.6	82.6	104.8	133.4	171.4	235	330.2
D3	92	108	133	165	210	280	380
D4	-	-	61.9	82.6	111.1	165.1	247.6
d	M10	M10	M10	M12	M16	M20	M24



Type C

NO.	3	4	5	6	8	11	15
D1	53.975	63.513	82.563	106.375	139.719	196.869	285.775
D2	75	85	104.8	133.4	171.4	235	330.2
D3	102	112	135	165	220	290	400



Type D

NO.	3	4	5	6	8	11	15
D1	53.975	63.513	82.563	106.375	139.719	196.869	285.775
D2	70.6	82.6	104.8	133.4	171.4	235	330.2
D3	92	117	146	181	225	298	403