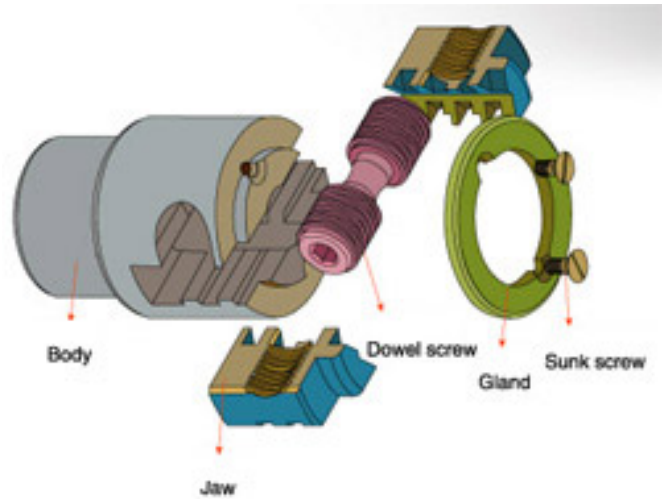
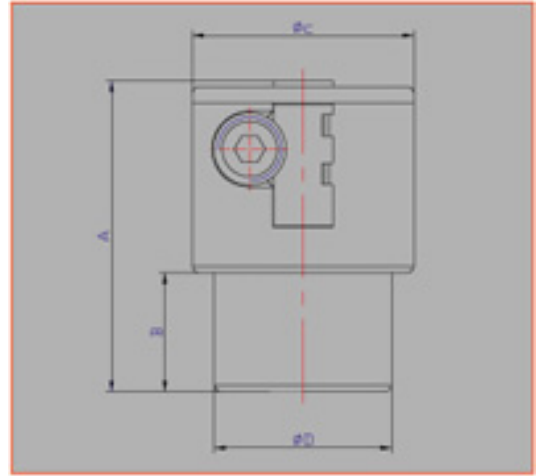


2-JAW TAPPING CHUCK



MORSE JACQUARD MOUNT

Art.No	Model	Capacity		Mount mm	A mm	B mm	C mm	D mm
		mm	Inch					
900201	J9200	1-10	1/32"-3/8"	J2	55	23	43.5	33
900401	J9210	1-10	1/32"-3/8"	J33	55	23	43.5	33
900701	J9210	1-10	1/32"-3/8"	JT6	55	23	43.5	33
901301	J9213	1-13	1/32"-1/2"	JT3	62	24	48	38
901701	J9213	1-13	1/32"-1/2"	JT6	62	24	48	38
912301	J9113	1-13	1/32"-1/2"	B18	62	24	48	38
902701	J9216	1-16	1/32"-5/8"	JT6	71	27.5	51	41
902301	J9216	1-16	1/32"-5/8"	JT3	71	27.5	51	41
903301	J9116	1-16	1/32"-5/8"	B18	71	27.5	51	41
914401	J9120	1-20	1/32"-3/4"	B22	76	23	61	50
914301	J9120	1-20	1/32"-3/4"	B18	83	30	61	50
903301	J9220	1-20	1/32"-3/4"	JT3	76	23	61	50
915401	J9125	1-25	1/32"-1"	B22	93	35	73	53

TAPPING CHUCK



Features:

1. Compose drill chuck and tapping chuck together, special inner structure multi-purpose.
2. Only need to rotate front sleeve to drill holes.
3. Only need to regulate front sleeve to match different diameter tapping drill and get perfect results, save assistant time.

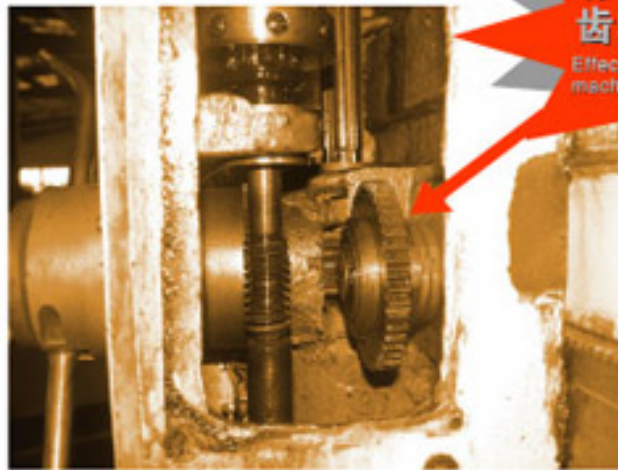
Mount	Tapping capacity
B16	M3-M12
B18	M3-M12

TAPER SHANK TAPPING CHUCK



Mount	Tapping capacity
MT3	M3-M12
MT3	M12-M24
MT4	M12-M24
MT5	M24-M42

HIGH-TORSION ANTI-OVERLOAD TOOL FOR MACHINE



有效保护机床
齿轮免受损坏

Effectively protect the gear of
machine against damaging



Application

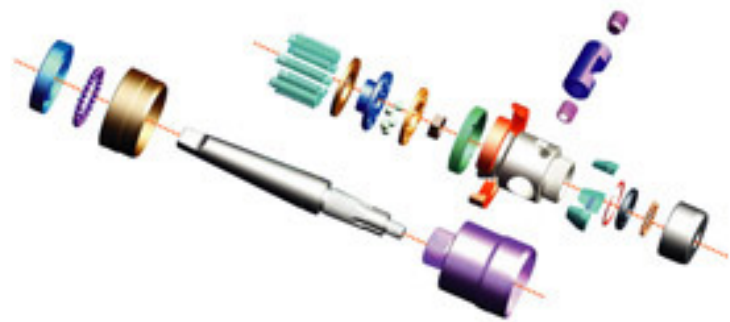
Recommended for lathe, tapping Machine, drilling Machine And Boring Machine.

Features

1. With the overloading protection function which can protect over loaded.
2. It can adjust the max loading torque.
3. Taper mounting can assure good precision and early assembled and released.
4. It can be adapted to drill chucks, bits, milling cutters and tapping tools.

Art.No	Model	Mount	D mm	L mm
940201	J9404	MT4	78	277

TAPPING CHUCK OP SERIES



Application

Recommended for for lathe, drilling and boring machines.

Features

- 1. his product combined drilling and tapping function into one. is structure is unique and is of multiple uses.
- 2. Only move the tightening ring of the chuck, the drilling and tapping sleeves can be replaced rapidly.
- 3. When drilling, the Morse sleeve can be locked automatically; when tapping, torque overloaded device can slide smoothly to prevent the screw tape from being broken.
- 4. For screw taps of different diameter, only the screw nut is adjusted, different slide torque can be obtained and it is convenient and fast. The labor strengthen can be greatly reduced and the assist time is reduced by more than 80%.

Mount	Tapping capacity
MT3	M3-M12
MT4	M12-M24
MT5	M24-M42

DRILL CHUCK



Application: Recommended for light, medium and heavy-duty portable bench or floor mounted power tools

Features:

1. The function of the overloading protection is to prevent drill bits, the chuck and the machine shaft from broken when the torque is overloaded.
2. Sleeve, key hole and key are shaped by quenching.
3. Jaws are specifically engineered for tight tolerance production drilling.
4. Sleeve teeth and key holes are shaped by cold pressing.
5. Super precision and durability.