

Features:

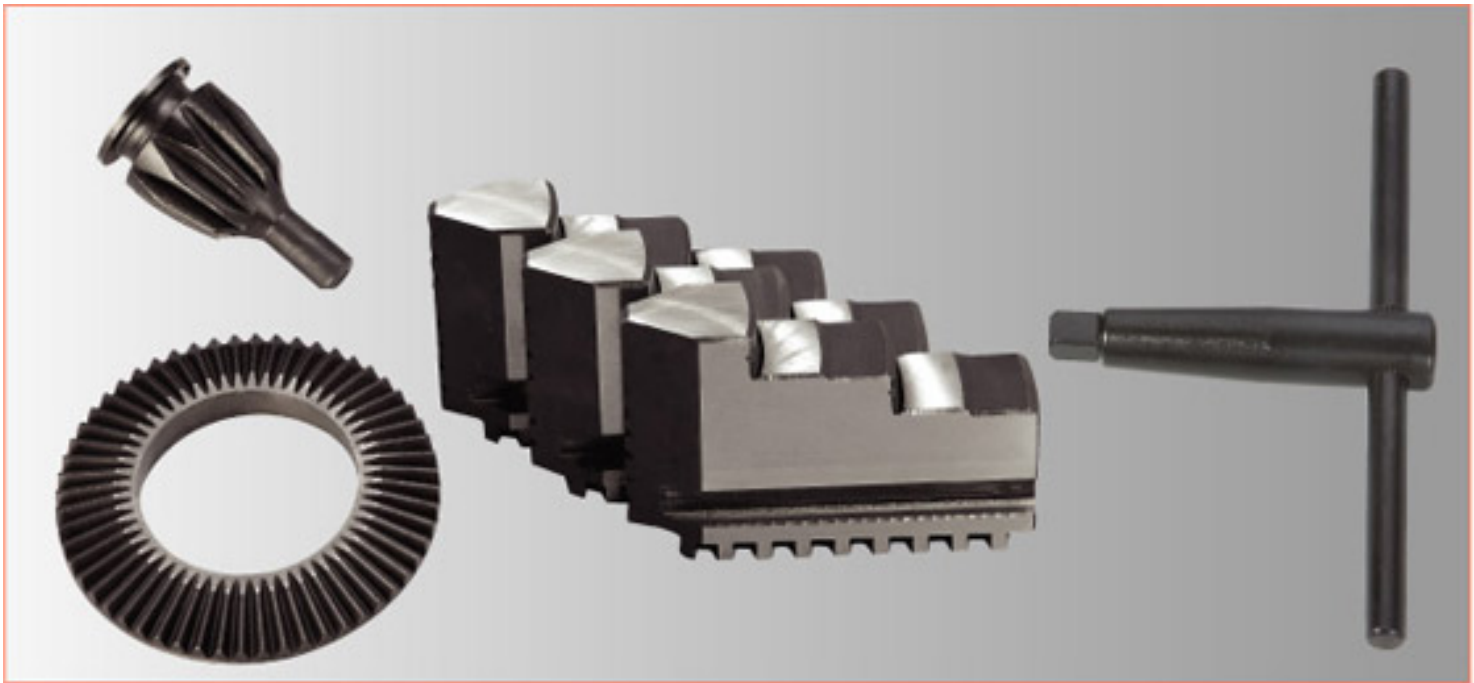
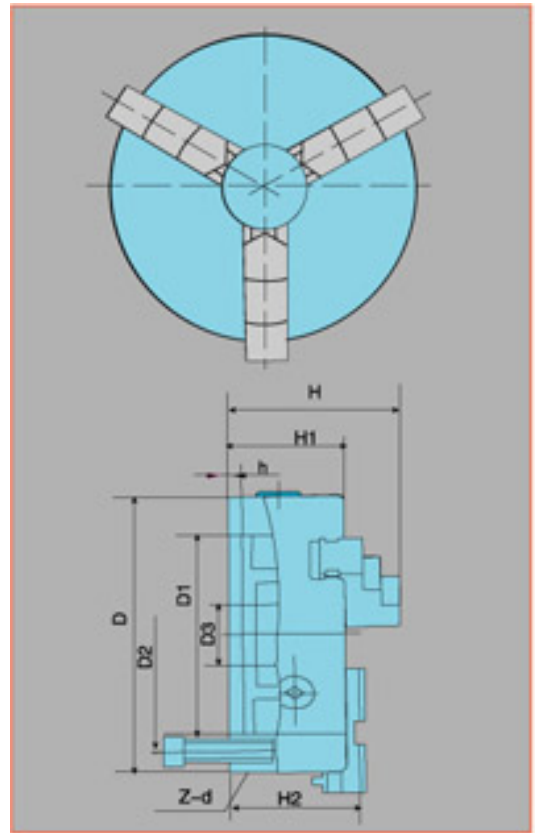
1. Short cylindrical center mounting.
2. Steel body, suitable for higher rotation speed.
3. The structure type of jaws include one-piece and two-piece.

Characteristic parameters

Size	D1	D2	D3	H	H1	H2	h	z-d	Max.input torque	Max.speed	Net.WT
80	56	66	16	66	50	-	3.5	3-M6	40	6600	1.9
100	70	84	22	74.5	55	-	3.5	3-M8	60	6000	3.2
125	95	108	30	84	58	-	4	3-M8	100	4900	5
130	100	115	30	86	60	-	3.5	3-M8	100	4900	5.6

160	130	142	40	95	65	-	5	3-M8	160	3800	8.8
160A	130	145	40	109	65	71	5	3-M8	160	3800	8.3
165	130	145	40	96.5	66.5	-	4.5	3-M8	160	3800	9.5
190	155	172	55	105	75	-	5	3-M10	250	3000	13.8
200	165	180	65	109	75	-	5	3-M10	250	3000	15.5
200C	165	180	65	122	75	78	5	3-M10	250	3000	14.1
200A	165	180	65	122	75	80	5	3-M10	250	3000	14.1
240	195	215	70	120	80	-	8	3-M12	320	2400	24
240C	195	215	70	130	80	84	8	3-M12	320	2400	20
250	206	226	80	120	80	-	5	3-M12	320	2400	25.7
250C	206	226	80	130	80	84	5	3-M12	320	2400	23
250A	206	226	80	136	80	86	5	3-M12	320	2400	23
315	260	285	100	147	90	-	6	3-M16	400	1900	47
315A	260	285	100	153	90	95	6	3-M16	400	1900	41
320	270	290	100	152.5	95	-	11	3-M16	400	1900	47.5
320C	270	290	100	153.5	95	101.5	11	3-M16	400	1900	42
325	272	290	100	153.5	96	-	12	3-M16	400	1900	49
325C	272	296	100	154.5	96	102.5	12	3-M16	500	1500	44
325A	272	296	100	169.5	96	105.5	12	3-M16	400	1900	46
380	325	350	135	155.7	98	-	6	3-M16	500	1500	65
380C	325	350	135	156.7	98	104.5	6	3-M16	500	1500	60
380A	325	350	135	171.5	98	107.5	6	3-M16	500	1500	62
400D	340	368	130	172	100	108	6	6-M16	630	1200	71
500D	440	465	210	202	115	126	6	6-M16	630	1200	117.6
500A	440	465	210	202	115	126	6	6-M16	630	1200	119
630D	560	595	270	218	133.5	142	7	6-M16	800	1000	-

钢盘体
STEEL BODY



Features:

- 1.High precision short cylindrical center mounting and the mounting.
- 2.High quality steel body suitable for higher rotation speed.
- 3.K15 chucks conform to DIN standard,K11G chucks conform to GB standard.
- 4.Flimsy parts are specifically engineered by quenching,for greater durability and extendedlife.
- 5.High self-centring precision and superior gripping force to meet the precision processing demands.

Characteristic parameters

Size	D1	D2	D3	H	H1	H2	h	z-d	Max.input torque (Nm)	Max.speed(r/min)	Net.WT
80	56	67	16	66	50	-	3.5	3-M6	40	5200	1.5
100	70	83	20	75	55	-	3.5	3-M8	60	4800	3.2
125	95	108	32	84	58	-	4	3-M8	100	4300	4.9
160	125	140	42	95	65	-	5	6-M10	160	3800	9
160A	125	140	42	109	65	71	5	6-M10	160	3800	8.5
200	160	176	55	109	75	-	5	6-M10	250	3100	16
200A	160	176	55	122	75	80	5	6-M10	250	3100	14.5
250	200	224	76	120	80	-	5	6-M12	320	2700	26
250A	200	224	76	136	80	86	5	6-M12	320	2700	24
315	260	286	103	147	90	-	6	6-M16	400	2000	46
315A	260	286	103	153	90	95	6	6-M16	400	2000	42
400D	330	362	136	172	100	108	6	6-M16	500	1500	78
500D	420	458	190	202	115	126	6	6-M16	630	1100	126
500A	420	458	190	202	115	126	6	6-M16	630	1100	128
630D	545	586	252	218	133.5	142	7	6-M16	800	1000	215